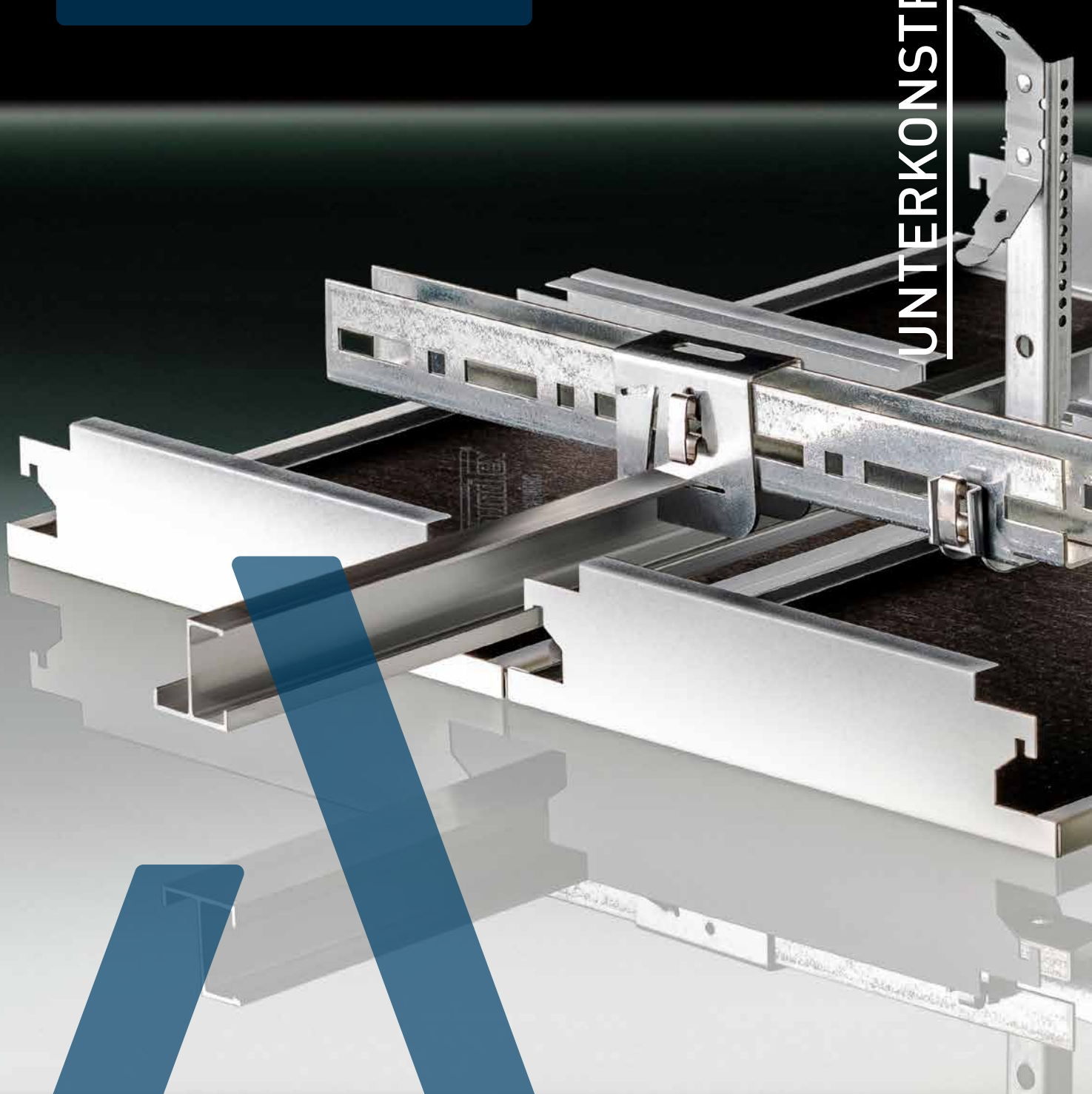


UNTERKONSTRUKTIONEN



Intro

Grundkonstruktion

Sottostruttura | Sous-construction

- 3 mit C20 Profil
con profilo C20 | avec primaire profil C20
- 4 mit Rostwinkel
con barra primaria forata | avec cornière perforée

Einhängesystem

Sistema hook-on | Système hook-on

- 5 mit HT-Profil
con profilo HT | avec profil HT
- 7 mit Z-Profil
con profilo a Z | avec profil Z

8 Klemmsystem

Sistema clip-in | Système clip-in

Abhängung

Sospensione | Suspension

- 10 mit Gewindestange
con asta filettata M6 | avec tige filetée
- 11 mit Noniushänger
con barra asolata | avec nonius
- 13 mit Abhängedraht
con tondino di sospensione | avec fil de suspension

14 Randabschlüsse

Profili perimetrali | Raccords muraux

Brandschutzsystem

Sistema di protezione antincendio | Plafonds coupe- feu

- 19 EI 30
EI 30 | EI 30
- 23 EI 90
EI 30 | EI 90
- 27 Allgemein
In generale | En général

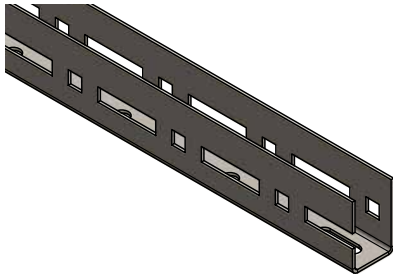
Metalit AGI

Murmattenstrasse 7
6233 Büron
Schweiz

Geschäftsführung:
Martin Zimmermann

T +41 41 925 60 22
E info@metalit.ch
W metalit.ch
Sitz Büron
GS
FN 23 57 11
UID CHE 33 72 12 644

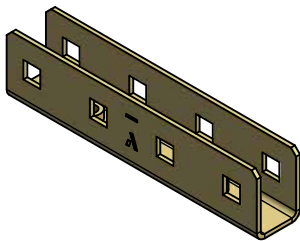
Material	Dimension	Länge	Farbe	Einheit
Materiale	Dimensioni	Lunghezza	Colore	Unité
Matériaux	Dimension	Longueur	Couleur	Unità



C20-Profil

Profilo primario C20 | Profil C20

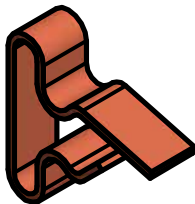
3490008	verzinkter Stahl 1,5 mm	31/20/31 mm	4000 mm	blank	lfm	40
3490008	acciaio zincato 1.5 mm	31/20/31 mm	4000 mm	non rivestito	ml	40
3490008	acier galvanisé 1.5 mm	31/20/31 mm	4000 mm	brut	ml	40



Längsverbinder für C20

Sottogiunto per C20 | Connecteur pour profil C20

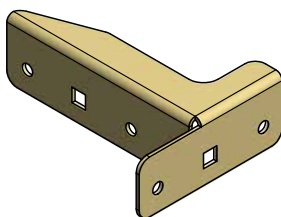
3490011	verzinkter Stahl 1,5 mm	23/16, 5/23 mm	95,5 mm	blank	Stk	100
3490011	acciaio zincato 1.5 mm	23/16, 5/23 mm	95,5 mm	non rivestito	pz	100
3490011	acier galvanisé 1.5 mm	23/16, 5/23 mm	95,5 mm	brut	pc	100



Steck-Clip zu C20

Clip a innesto per C20 | Clip de verrouillage pour profil C20

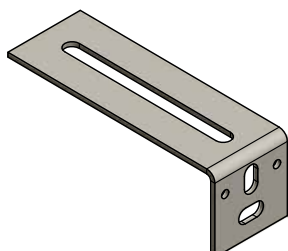
3050094	Federstahl 0,9 mm	6/20 mm	20 mm	blank	Stk	100
3050094	Acciaio per molle 0.9 mm	6/20 mm	20 mm	non rivestito	pz	100
3050094	Acier à ressort 0.9 mm	6/20 mm	20 mm	brut	pc	100



T-Verbinder für C20

Connettore a T per C20 | Connecteur T pour profil C20

3490014	verzinkter Stahl 1,5 mm	28/71 mm	91 mm	blank	Stk	50
3490014	acciaio zincato 1.5 mm	28/71 mm	91 mm	non rivestito	pz	50
3490014	acier galvanisé 1.5 mm	28/71 mm	91 mm	brut	pc	50

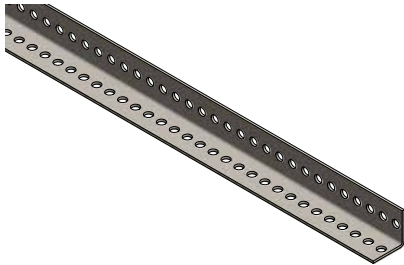


Universal Wandanker

Staffa di ancoraggio universale | Equerre murale

3050093	verzinkter Stahl 1,5 mm	100/35 mm		blank	Stk	100
3050093	acciaio zincato 1.5 mm	100/35 mm		non rivestito	pz	100
3050093	acier galvanisé 1.5 mm	100/35 mm		brut	pc	100

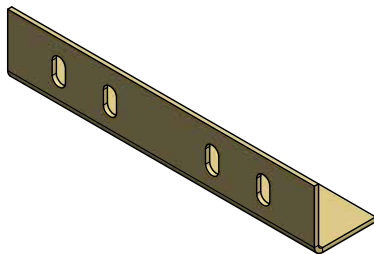
Material	Dimension	Länge	Farbe	Einheit
Materiale	Dimensioni	Lunghezza	Colore	Unité
Matériaux	Dimension	Longueur	Couleur	Unità



L-Rostwinkel

Barra primaria forata a L | Cornière perforée

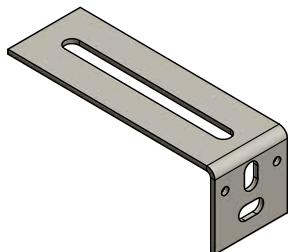
3490002	verzinkter Stahl 2,0 mm	30/30 mm	4000 mm	blank	lfm	40
3490002	acciaio zincato 2.0 mm	30/30 mm	4000 mm	non rivestito	ml	40
3490002	acier galvanisé 2.0 mm	30/30 mm	4000 mm	brut	ml	40



Längsverbinder für Rostwinkel

Sottogiunto per barra forata a L | Connecteur pour cornière perforée

3050046	verzinkter Stahl 2,0 mm	30/30 mm	150 mm	blank	Stk	100
3050046	acciaio zincato 2.0 mm	30/30 mm	150 mm	non rivestito	pz	100
3050046	acier galvanisé 2.0 mm	30/30 mm	150 mm	brut	pc	100

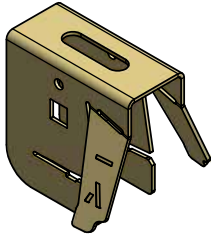


Universal Wandanker

Staffa di ancoraggio a parete universale | Equerre murale

3050093	verzinkter Stahl 1,5 mm	100/35 mm		blank	Stk	100
3050093	acciaio zincato 1.5 mm	100/35 mm		non rivestito	pz	100
3050093	acier galvanisé 1.5 mm	100/35 mm		brut	pc	100

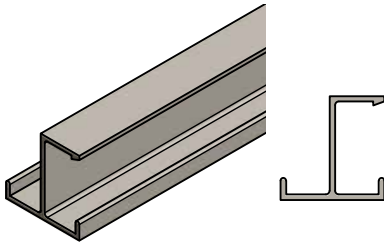
Material	Dimension	Länge	Farbe	Einheit
Materiale	Dimensioni	Lunghezza	Colore	Unité
Matériaux	Dimension	Longueur	Couleur	Unità



Kreuzverbinder von C20 auf HT28/Z-Profil

Connettore da C20 a profilo HT28/Z | Suspente pour profil HT28 sur C20

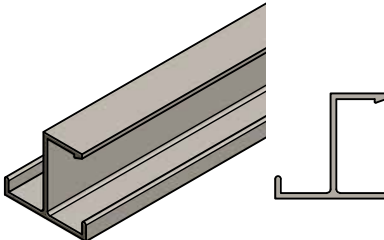
3050158	verzinkter Stahl 1,25 mm	50/23/50 mm	50 mm	blank	Stk	50
3050158	acciaio zincato 1.25 mm	50/23/50 mm	50 mm	non rivestito	pz	50
3050158	acier galvanisé 1.25 mm	50/23/50 mm	50 mm	brut	pc	50



HT28-Profil

Profilo HT28 | Profil HT28

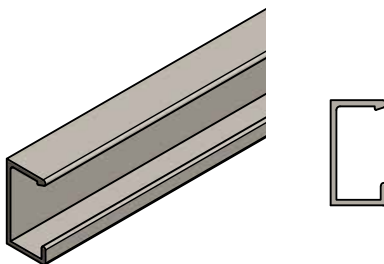
3050068	Aluminium 1,5 mm	28/28 mm	4000 mm	blank	lfm	48
3050068	Alluminio 1.5 mm	28/28 mm	4000 mm	non rivestito	ml	48
3050068	Aluminium 1.5 mm	28/28 mm	4000 mm	brut	ml	48



HT31-Profil

Profilo HT31 | Profil HT31

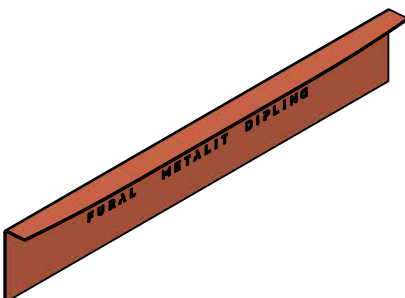
5200054	Aluminium 1,5 mm	31/28 mm	4000 mm	blank	lfm	48
5200054	Alluminio 1.5 mm	31/28 mm	4000 mm	non rivestito	ml	48
5200054	Aluminium 1.5 mm	31/28 mm	4000 mm	brut	ml	48



Halbes HT-Profil

Mezzo profilo HT | Demi-profil HT28

3090012	Aluminium 1,6 mm	15/28 mm	4000 mm	blank	lfm	40
3090012	Alluminio 1.6 mm	15/28 mm	4000 mm	non rivestito	ml	40
3090012	Aluminium 1.6 mm	15/28 mm	4000 mm	brut	ml	40

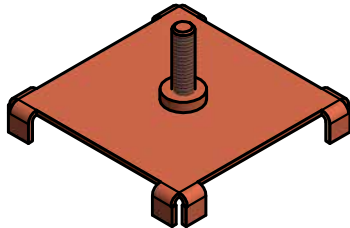


Längsverbinder für HT28 Profil

Sottogiunto per profilo HT28 | Connecteur pour HT28

4050030	verzinkter Stahl 0,60 mm	25/10 mm	150 mm	blank	Stk	10
4050030	acciaio zincato 0.60 mm	25/10 mm	150 mm	non rivestito	pz	10
4050030	acier galvanisé 0.60 mm	25/10 mm	150 mm	brut	pc	10

Material	Dimension	Länge	Farbe	Einheit
Materiale	Dimensioni	Lunghezza	Colore	Unité
Matériaux	Dimension	Longueur	Couleur	Unità



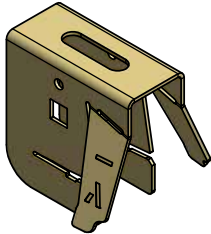
Sicherungsplatte für HT31

Piastra anti-sollevamento per profilo HT31

Verrou anti-soulèvement pour profil HT31

3090018	verzinkter Stahl 1,00 mm	43/43 mm	blank	Stk	100
3090018	acciaio zincato 1.00 mm	43/43 mm	non rivestito	pz	100
3090018	acier galvanisé 1.00 mm	43/43 mm	brut	pc	100

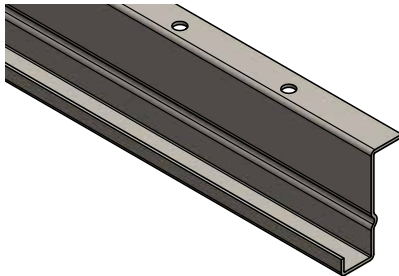
Material	Dimension	Länge	Farbe	Einheit
Materiale	Dimensioni	Lunghezza	Colore	Unité
Matériaux	Dimension	Longueur	Couleur	Unità



Kreuzverbinder von C20 auf HT28/Z-Profil

Connettore da C20 a profilo HT28/Z | Suspente pour profil HT28 sur C20

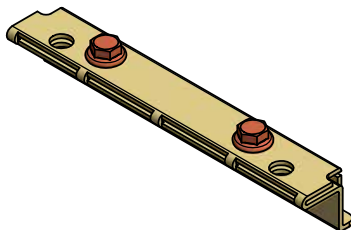
3050158	verzinkter Stahl 1,25 mm	50/23/50 mm	50 mm	blank	Stk	100
3050158	acciaio zincato 1.25 mm	50/23/50 mm	50 mm	non rivestito	pz	100
3050158	acier galvanisé 1.25 mm	50/23/50 mm	50 mm	brut	pc	100



Z43-Einhängeprofil

Profilo hook-on a Z43 | Profil Z43

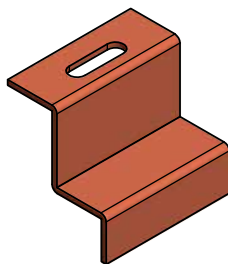
4050015	verzinkter Stahl 1,25 mm	7/15/43/14 mm	4000 mm	blank	lfm	40
4050015	acciaio zincato 1.25 mm	7/15/43/14 mm	4000 mm	non rivestito	ml	40
4050015	acier galvanisé 1.25 mm	7/15/43/14 mm	4000 mm	brut	ml	40



Längsverbinder für Z43-Einhängeprofil

Giunto per profilo hook-on a Z43 | Connecteur pour Z43

4050032	verzinkter Stahl 1,5 mm	120 mm	blank	Stk	100
4050032	acciaio zincato 1.5 mm	120 mm	non rivestito	pz	100
4050032	acier galvanisé 1.5 mm	120 mm	brut	pc	100

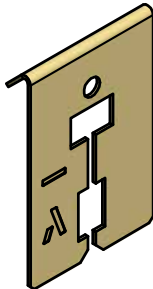


Sicherungsplatte für Z-Einhängeprofil

Blocco di sicurezza sul profilo Z43 | Verrou de sécurité sur profil Z43

3090019	verzinkter Stahl 1,50 mm	blank	Stk	100
3090019	acciaio zincato 1.50 mm	non rivestito	pz	100
3090019	acier galvanisé 1.50 mm	brut	pc	100

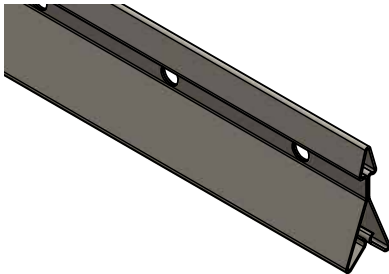
Material	Dimension	Länge	Farbe	Einheit
Materiale	Dimensioni	Lunghezza	Colore	Unité
Matériaux	Dimension	Longueur	Couleur	Unità



Kreuzverbinder C20 auf Klemmschiene

Connettore da C20 a profilo a scatto | Suspente pour rail clip-in sur C20

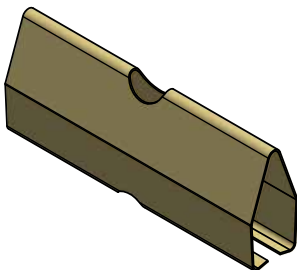
4050034	verzinkter Stahl 0,75 mm	48/7 mm	blank	Stk	100
4050034	acciaio zincato 0.75 mm	48/7 mm	non rivestito	pz	100
4050034	acier galvanisé 0.75 mm	48/7 mm	brut	pc	100



Klemmschiene 16/38

Profilo a scatto 16/38 | Rail clip-in 16/38

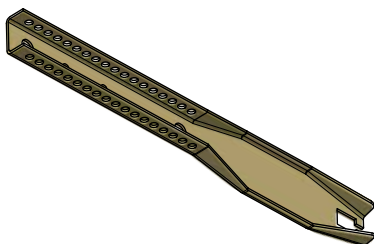
3000008	verzinkter Stahl 0,60 mm	16/38 mm	4000 mm	blank	lfm	60
3000008	acciaio zincato 0.60 mm	16/38 mm	4000 mm	non rivestito	ml	60
3000008	acier galvanisé 0.60 mm	16/38 mm	4000 mm	brut	ml	60



Längsverbinder Klemmschiene

Giunto per profili a scatto | Connecteur pour rail clip-in

3000010	verzinkter Stahl 0,50 mm	18/40 mm	100 mm	blank	Stk	100
3000010	acciaio zincato 0.50 mm	18/40 mm	100 mm	non rivestito	pz	100
3000010	acier galvanisé 0.50 mm	18/40 mm	100 mm	brut	pc	100



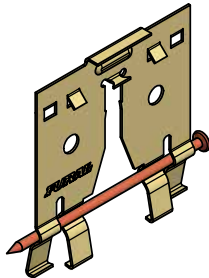
Noniushängerunterteil für Klemmschiene

Barra asolata/Nonius inferiore per per profilo a scatto

Partie inférieure de la suspension Nonius pour rail clip-in

3060033	verzinkter Stahl 1,00 mm	28/9 mm	190 mm	blank	Stk	100
3060033	acciaio zincato 1.00 mm	28/9 mm	190 mm	non rivestito	pz	100
3060033	acier galvanisé 1.00 mm	28/9 mm	190 mm	brut	pc	100

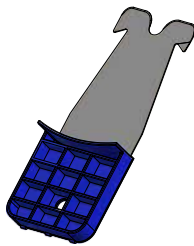
Material	Dimension	Länge	Farbe	Einheit
Materiale	Dimensioni	Lunghezza	Colore	Unité
Matériaux	Dimension	Longueur	Couleur	Unità



Kreuzverbinder inklusive S-Stift

Connettore a croce con perno di sicurezza | Connecteur avec goupille en S

3000009	verzinkter Stahl 1,50 mm	63/69 mm	blank	Stk	100
3000009	acciaio zincato 1.50 mm	63/69 mm	non rivestito	pz	100
3000009	acier galvanisé 1.50 mm	63/69 mm	brut	pc	100



Deckenöffner Klemmsystem Omega

Spatola sgancia pannello Omega per sistema clip-in

Spatule pour ouvrir le plafond clips Omega

9100047	verzinkter Stahl 0,50 mm	60/160 mm	blank	Stk	2
9100047	acciaio zincato 0.50 mm	60/160 mm	non rivestito	pz	2
9100047	acier galvanisé 0.50 mm	60/160 mm	brut	pc	2

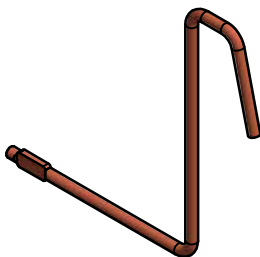


Justiermesser Klemmsystem

Lama di regolazione pannello per sistema clip-

Couteau pour ajuster le plafond clips

9100007	verzinkter Stahl 0,50 mm	60/160 mm	blank	Stk	2
9100007	acciaio zincato 0.50 mm	60/160 mm	non rivestito	pz	2
9100007	acier galvanisé 0.50 mm	60/160 mm	brut	pc	2

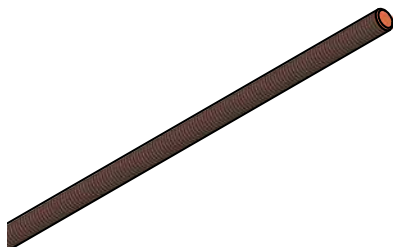


Doorbügel für KLK Langfeldplatten

Aggancio DOOR per pannello KLK | Crochet pour panneau rectangulaire KLK

4000003	verzinkter Stahl 2,50 mm		blank	Stk	100
4000003	acciaio zincato 2.50 mm		non rivestito	pz	100
4000003	acier galvanisé 2.50 mm		brut	pc	100

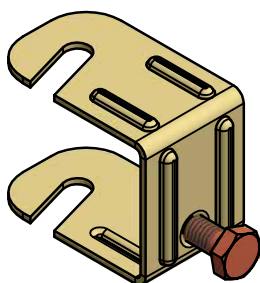
Material	Dimension	Länge	Farbe	Einheit
Materiale	Dimensioni	Lunghezza	Colore	Unité
Matériaux	Dimension	Longueur	Couleur	Unità



Gewindestange M6

Asta filettata M6 | Tige filetée M6

2000163	verzinkter Stahl 8,8 mm	1000 mm	blank	Stk	50
2000163	acciaio zincato 8.8 mm	1000 mm	non rivestito	pz	50
2000163	acier galvanisé 8.8 mm	1000 mm	brut	pc	50
2000161	verzinkter Stahl 8,8 mm	2000 mm	blank	Stk	50
2000161	acciaio zincato 8.8 mm	2000 mm	non rivestito	pz	50
2000161	acier galvanisé 8.8 mm	2000 mm	brut	pc	50



Spannbügel mit M6 Spanschraube

Staffa di fissaggio con vite di bloccaggio M6

Suspente pour profil C20 avec vis de serrage M6

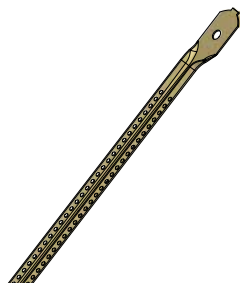
3050090			blank	Stk	100
3050090			non rivestito	pz	100
3050090			brut	pc	100

Material	Dimension	Länge	Farbe	Einheit
Materiale	Dimensioni	Lunghezza	Colore	Unité
Matériaux	Dimension	Longueur	Couleur	Unità

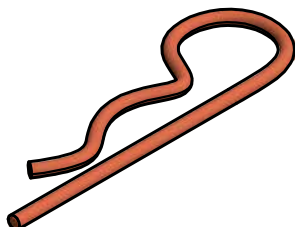
Noniusoberteil Nutzlänge

Barra asolata/Nonius superiore - L utile

Partie supérieure du Nonius, L



3060039	verzinkter Stahl 1,00 mm	28/9 mm	1065 mm	blank	Stk	25
3060039	acciaio zincato 1.0 mm	28/9 mm	1065 mm	non rivestito	pz	25
3060039	acier galvanisé 1.0 mm	28/9 mm	1065 mm	brut	pc	25
3060028	verzinkter Stahl 1,00 mm	28/9 mm	865 mm	blank	Stk	100
3060028	acciaio zincato 1.0 mm	28/9 mm	865 mm	non rivestito	pz	100
3060028	acier galvanisé 1.0 mm	28/9 mm	865 mm	brut	pc	100
3060027	verzinkter Stahl 1,00 mm	28/9 mm	765 mm	blank	Stk	100
3060027	acciaio zincato 1.0 mm	28/9 mm	765 mm	non rivestito	pz	100
3060027	acier galvanisé 1.0 mm	28/9 mm	765 mm	brut	pc	100
3060026	verzinkter Stahl 1,00 mm	28/9 mm	665 mm	blank	Stk	100
3060026	acciaio zincato 1.0 mm	28/9 mm	665 mm	non rivestito	pz	100
3060026	acier galvanisé 1.0 mm	28/9 mm	665 mm	brut	pc	100
3060025	verzinkter Stahl 1,00 mm	28/9 mm	565 mm	blank	Stk	100
3060025	acciaio zincato 1.0 mm	28/9 mm	565 mm	non rivestito	pz	100
3060025	acier galvanisé 1.0 mm	28/9 mm	565 mm	brut	pc	100
3060024	verzinkter Stahl 1,00 mm	28/9 mm	465 mm	blank	Stk	100
3060024	acciaio zincato 1.0 mm	28/9 mm	465 mm	non rivestito	pz	100
3060024	acier galvanisé 1.0 mm	28/9 mm	465 mm	brut	pc	100
3060023	verzinkter Stahl 1,00 mm	28/9 mm	365 mm	blank	Stk	100
3060023	acciaio zincato 1.0 mm	28/9 mm	365 mm	non rivestito	pz	100
3060023	acier galvanisé 1.0 mm	28/9 mm	365 mm	brut	pc	100
3050107	verzinkter Stahl 1,00 mm	28/9 mm	235 mm	blank	Stk	100
3050107	acciaio zincato 1.0 mm	28/9 mm	235 mm	non rivestito	pz	100
3050107	acier galvanisé 1.0 mm	28/9 mm	235 mm	brut	pc	100
3060022	verzinkter Stahl 1,00 mm	28/9 mm	265 mm	blank	Stk	100
3060022	acciaio zincato 1.0 mm	28/9 mm	265 mm	non rivestito	pz	100
3060022	acier galvanisé 1.0 mm	28/9 mm	265 mm	brut	pc	100
3060021	verzinkter Stahl 1,00 mm	28/9 mm	165 mm	blank	Stk	100
3060021	acciaio zincato 1.0 mm	28/9 mm	165 mm	non rivestito	pz	100
3060021	acier galvanisé 1.0 mm	28/9 mm	165 mm	brut	pc	100
3060020	verzinkter Stahl 1,00 mm	28/9 mm	115 mm	blank	Stk	100
3060020	acciaio zincato 1.0 mm	28/9 mm	115 mm	non rivestito	pz	100
3060020	acier galvanisé 1.0 mm	28/9 mm	115 mm	brut	pc	100
3060019	verzinkter Stahl 1,00 mm	28/9 mm	65 mm	blank	Stk	100
3060019	acciaio zincato 1.0 mm	28/9 mm	65 mm	non rivestito	pz	100
3060019	acier galvanisé 1.0 mm	28/9 mm	65 mm	brut	pc	100



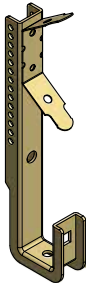
Sicherungsstift für Nonius

Spinotto di sicurezza per Nonius | Goupille de sécurité pour Nonius

3060032				blank	Stk	100
3060032				non rivestito	pz	100
3060032				brut	pc	100

Abhängung mit Noniusanhänger | Sospensione con asta filettata | Suspension avec tige filettée

Material	Dimension	Länge	Farbe	Einheit
Materiale	Dimensioni	Lunghezza	Colore	Unité
Matériaux	Dimension	Longueur	Couleur	Unità



Kombi-Nonius Hänger für C20

Barra asolata/Nonius inferiore per profilo C20

Combi-Nonius suspension pour C20

3050092			130 mm	blank	Stk	100
3050092			130 mm	non rivestito	pz	100
3050092			130 mm	brut	pc	100



Noniushängerunterteil für Klemmschiene

Barra asolata/Nonius inferiore per per profilo a scatto

Partie inférieure de la suspension Nonius pour rail clip-in

3060033	verzinkter Stahl 1,00 mm	28/9 mm	190 mm	blank	Stk	100
3060033	acciaio zincato 1,00 mm	28/9 mm	190 mm	non rivestito	pz	100
3060033	acier galvanisé 1.0 mm	28/9 mm	190 mm	brut	pc	100



Noniushängerunterteil für Rostwinkel

Barra asolata/Nonius inferiore per barra primaria forata

Partie inférieure de la suspension Nonius pour cornière perforée

3060034	verzinkter Stahl 1,00 mm	28/9 mm		blank	Stk	100
3060034	acciaio zincato 1,00 mm	28/9 mm		non rivestito	pz	100
3060034	acier galvanisé 1.0 mm	28/9 mm		brut	pc	100

Material	Dimension	Länge	Farbe	Einheit
Materiale	Dimensioni	Lunghezza	Colore	Unité
Matériaux	Dimension	Longueur	Couleur	Unità



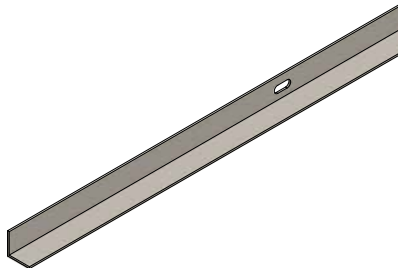
Abhängedraht mit Öse

Tondino di sospensione con occhiello

Fil de suspension avec œillet

3050013	verzinkter Stahl 4,00 mm	250 mm	blank	Stk	100
3050013	acciaio zincato 4,00 mm	250 mm	non rivestito	pz	100
3050013	acier galvanisé 4.0 mm	250 mm	brut	pc	100
3050015	verzinkter Stahl 4,00 mm	500 mm	blank	Stk	100
3050015	acciaio zincato 4,00 mm	500 mm	non rivestito	pz	100
3050015	acier galvanisé 4.0 mm	500 mm	brut	pc	100
3050016	verzinkter Stahl 4,00 mm	750 mm	blank	Stk	100
3050016	acciaio zincato 4,00 mm	750 mm	non rivestito	pz	100
3050016	acier galvanisé 4.0 mm	750 mm	brut	pc	100
3050017	verzinkter Stahl 4,00 mm	125 mm	blank	Stk	100
3050017	acciaio zincato 4,00 mm	125 mm	non rivestito	pz	100
3050017	acier galvanisé 4.0 mm	125 mm	brut	pc	100
3050025	verzinkter Stahl 4,00 mm	2000 mm	blank	Stk	100
3050025	acciaio zincato 4,00 mm	2000 mm	non rivestito	pz	100
3050025	acier galvanisé 4.0 mm	2000 mm	brut	pc	100

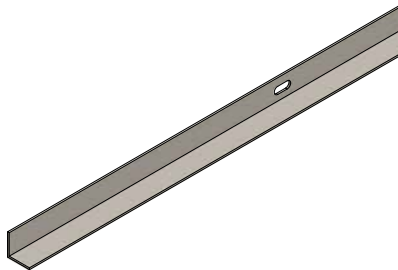
Material	Dimension	Länge	Farbe	Einheit
Materiale	Dimensioni	Lunghezza	Colore	Unité
Matériaux	Dimension	Longueur	Couleur	Unità



Einfachrandwinkel 20/20

Profilo perimetrale a L 20/20 | Profil simple L 20/20

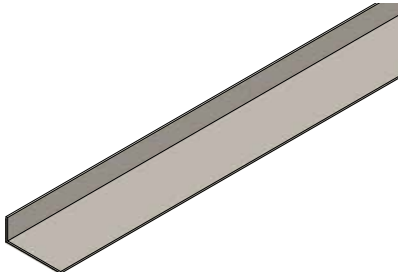
5200055	Aluminium 1,5 mm	20/20 mm	4000 mm	RAL 9010	lfm	40
5200055	Alluminio 1.5 mm	20/20 mm	4000 mm	RAL 9010	ml	40
5200055	Aluminium 1.5 mm	20/20 mm	4000 mm	RAL 9010	ml	40



Einfachrandwinkel 20/20

Profilo perimetrale a L 20/20 | Profil simple L 20/20

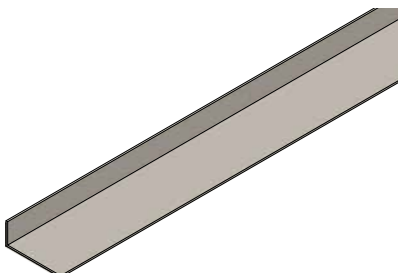
5200056	Aluminium 1,5 mm	20/20 mm	4000 mm	RAL 9016	lfm	40
5200056	Alluminio 1.5 mm	20/20 mm	4000 mm	RAL 9016	ml	40
5200056	Aluminium 1.5 mm	20/20 mm	4000 mm	RAL 9016	ml	40



Einfachrandwinkel 50/20

Profilo perimetrale a L 50/20 | Profil simple L 50/20

3070077	Aluminium 1,5 mm	50/20 mm	4000 mm	RAL 9010	lfm	40
3070077	Alluminio 1.5 mm	50/20 mm	4000 mm	RAL 9010	ml	40
3070077	Aluminium 1.5 mm	50/20 mm	4000 mm	RAL 9010	ml	40

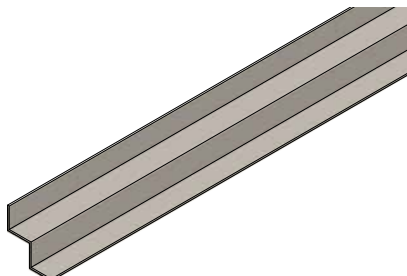


Einfachrandwinkel 50/20

Profilo perimetrale a L 50/20 | Profil simple L 50/20

3070105	Aluminium 1,5 mm	50/20 mm	4000 mm	RAL 9016	lfm	40
3070105	Alluminio 1.5 mm	50/20 mm	4000 mm	RAL 9016	ml	40
3070105	Aluminium 1.5 mm	50/20 mm	4000 mm	RAL 9016	ml	40

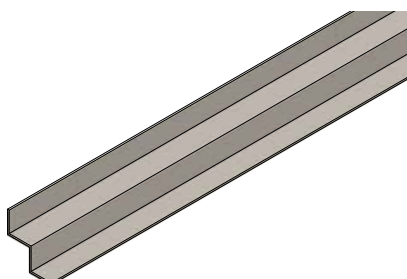
Material	Dimension	Länge	Farbe	Einheit
Materiale	Dimensioni	Lunghezza	Colore	Unité
Matériaux	Dimension	Longueur	Couleur	Unità



Doppelrandwinkel

Profilo perimetrale a doppia L | Profil double L

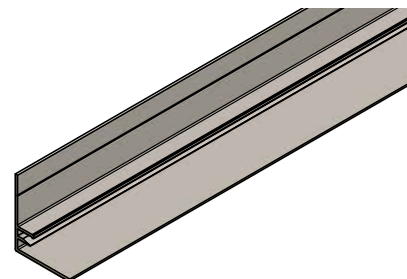
5200057	Aluminium 1,5 mm	20/20/20/20 mm	4000 mm	RAL 9010	lfm	40
5200057	Alluminio 1.5 mm	20/20/20/20 mm	4000 mm	RAL 9010	ml	40
5200057	Aluminium 1.5 mm	20/20/20/20 mm	4000 mm	RAL 9010	ml	40



Doppelrandwinkel

Profilo perimetrale a doppia L | Profil double L

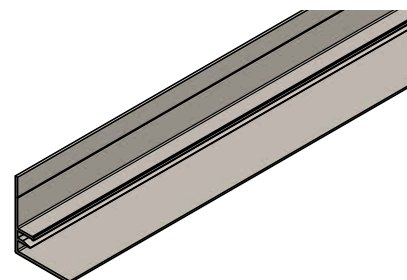
5200058	Aluminium 1,5 mm	20/20/20/20 mm	4000 mm	RAL 9016	lfm	40
5200058	Alluminio 1.5 mm	20/20/20/20 mm	4000 mm	RAL 9016	ml	40
5200058	Aluminium 1.5 mm	20/20/20/20 mm	4000 mm	RAL 9016	ml	40



Federleiste 30/25

Profilo perimetrale con attacco clips 30/25 | Profil simple L avec rainure

3070022	Aluminium 1,5 mm	30/25 mm	4000 mm	RAL 9010	lfm	40
3070022	Alluminio 1.5 mm	30/25 mm	4000 mm	RAL 9010	ml	40
3070022	Aluminium 1.5 mm	30/25 mm	4000 mm	RAL 9010	ml	40

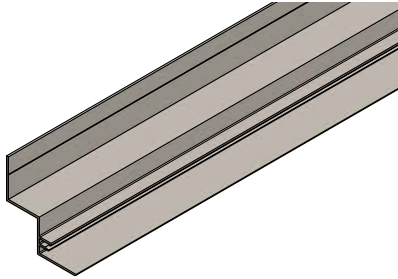


Federleiste 30/25

Profilo perimetrale con attacco clips 30/25 | Profil simple L avec rainure

3070053	Aluminium 1,5 mm	30/25 mm	4000 mm	RAL 9016	lfm	40
3070053	Alluminio 1.5 mm	30/25 mm	4000 mm	RAL 9016	ml	40
3070053	Aluminium 1.5 mm	30/25 mm	4000 mm	RAL 9016	ml	40

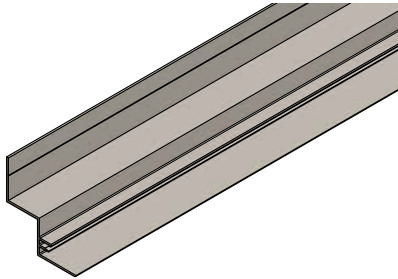
Material	Dimension	Länge	Farbe	Einheit
Materiale	Dimensioni	Lunghezza	Colore	Unité
Matériaux	Dimension	Longueur	Couleur	Unità



Schattenfederleiste 20/20

Profilo perimetrale a doppia L con attacco clips 20/20
 Profil double L avec rainure

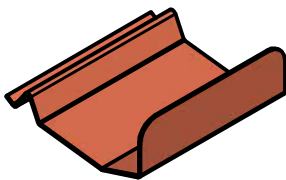
3070027	Aluminium 1,5 mm	25/20/20/25 mm	4000 mm	RAL 9010	lfm	40
3070027	Alluminio 1.5 mm	25/20/20/25 mm	4000 mm	RAL 9010	ml	40
3070027	Aluminium 1.5 mm	25/20/20/25 mm	4000 mm	RAL 9010	ml	40



Schattenfederleiste 20/20

Profilo perimetrale a doppia L con attacco clips 20/20
 Profil double L avec rainure

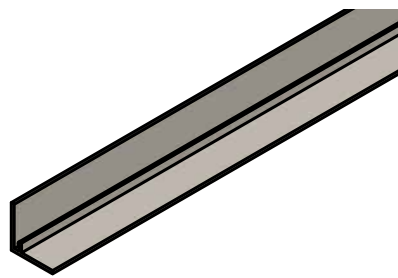
3070054	Aluminium 1,5 mm	25/20/20/25 mm	4000 mm	RAL 9016	lfm	40
3070054	Alluminio 1.5 mm	25/20/20/25 mm	4000 mm	RAL 9016	ml	40
3070054	Aluminium 1.5 mm	25/20/20/25 mm	4000 mm	RAL 9016	ml	40



Klemmfeder für Federleiste

Molla di bloccaggio per perimetrale con clips
 Verrou / Ressort pour profil avec rainure

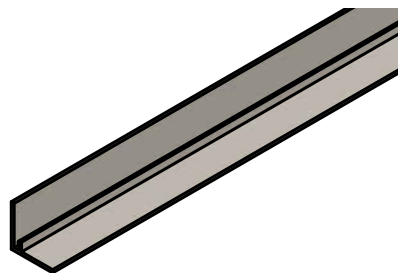
3070020				blank	Stk	400
3070020				non rivestito	pc	400
3070020				brut	pz	400



Einfachrandwinkel Click 20/20

Profilo perimetrale a L Click 20/20 | Profil simple L click 20/20

3070082	Aluminium 1,5 mm	20/20 mm	4000 mm	RAL 9010	lfm	40
3070082	Alluminio 1.5 mm	20/20 mm	4000 mm	RAL 9010	ml	40
3070082	Aluminium 1.5 mm	20/20 mm	4000 mm	RAL 9010	ml	40



Einfachrandwinkel Click 20/20

Profilo perimetrale a L Click 20/20 | Profil simple L click 20/20

3070110	Aluminium 1,5 mm	20/20 mm	4000 mm	RAL 9016	lfm	40
3070110	Alluminio 1.5 mm	20/20 mm	4000 mm	RAL 9016	ml	40
3070110	Aluminium 1.5 mm	20/20 mm	4000 mm	RAL 9016	ml	40

Material	Dimension	Länge	Farbe	Einheit
Materiale	Dimensioni	Lunghezza	Colore	Unité
Matériaux	Dimension	Longueur	Couleur	Unità



Doppelrandwinkel Click 20/20/20

Profilo perimetrale a doppia L Click 20/20/20 | Profil double L click 20/20/20

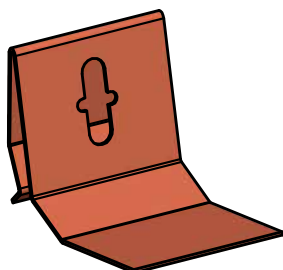
5200059	Aluminium 1,5 mm	20/20/20 mm	4000 mm	RAL 9010	lfm	40
5200059	Alluminio 1.5 mm	20/20/20 mm	4000 mm	RAL 9010	ml	40
5200059	Aluminium 1.5 mm	20/20/20 mm	4000 mm	RAL 9010	ml	40



Doppelrandwinkel Click 20/20/20

Profilo perimetrale a doppia L Click 20/20/20 | Profil double L click 20/20/20

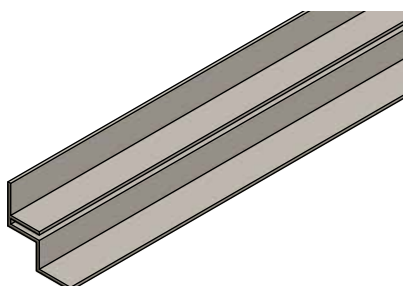
5200060	Aluminium 1,5 mm	20/20/20 mm	4000 mm	RAL 9016	lfm	40
5200060	Alluminio 1.5 mm	20/20/20 mm	4000 mm	RAL 9016	ml	40
5200060	Aluminium 1.5 mm	20/20/20 mm	4000 mm	RAL 9016	ml	40



Click-Sicherungsfeder

Molla di bloccaggio per perimetrale Click | Verrou / Ressort pour profil click

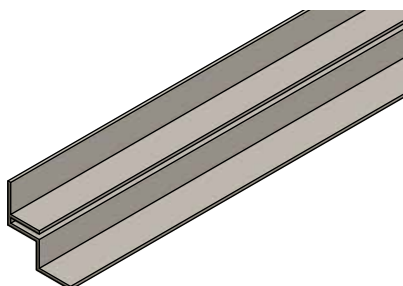
3070087				blank	Stk	100
3070087				non rivestito	pz	100
3070087				brut	pc	100



Doppelrandwinkel mit Sicherung 13/15

Profilo a doppia L antisollevamento 13/15 | Profil double L anti-soulèvement 13/15

3070084	Aluminium 1,5 mm	20/13/15/18 mm		RAL 9010	lfm	40
3070084	Alluminio 1.5 mm	20/13/15/18 mm		RAL 9010	ml	40
3070084	Aluminium 1.5 mm	20/13/15/18 mm		RAL 9010	ml	40

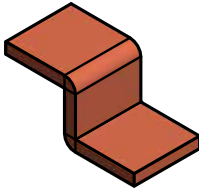


Doppelrandwinkel mit Sicherung 13/15

Profilo a doppia L antisollevamento 13/15 | Profil double L anti-soulèvement 13/15

3070112	Aluminium 1,5 mm	20/13/15/18 mm		RAL 9016	lfm	40
3070112	Alluminio 1.5 mm	20/13/15/18 mm		RAL 9016	ml	40
3070112	Aluminium 1.5 mm	20/13/15/18 mm		RAL 9016	ml	40

Material Materiale Matériaux	Dimension Dimensioni Dimension	Länge Lunghezza Longueur	Farbe Colore Couleur	Einheit Unité Unità
------------------------------------	--------------------------------------	--------------------------------	----------------------------	---------------------------

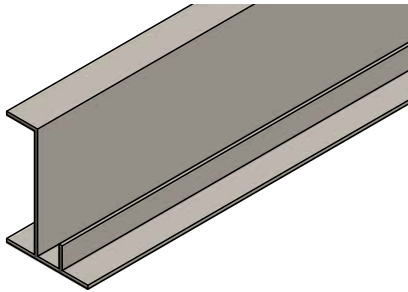


Sicherung für Doppelrandwinkel 13/15

Molla di bloccaggio per profilo a doppia L antisollevamento 13/15

Verrou / Ressort pour profil anti-soulèvement

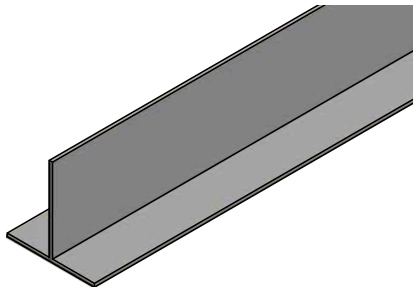
3000032			blank	Stk	100
3000032			non rivestito	pz	100
3000032			brut	pc	100



Tragprofil T52

Profilo portante T52 | Profil-poteur T52

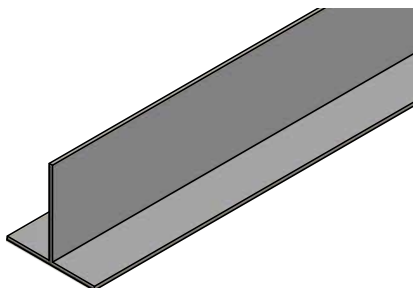
3090016	Aluminium 1,5 mm	38/53 mm	4000 mm	RAL 9010	lfm	40
3090016	Alluminio 1.5 mm	38/53 mm	4000 mm	RAL 9010	ml	40
3090016	Aluminium 1.5 mm	38/53 mm	4000 mm	RAL 9010	ml	40



T40-Profil

Profilo a 40 mm | T40 - Profil

3090017	Aluminium 1,6 mm	40/40 mm	4000 mm	RAL 9010	lfm	40
3090017	Alluminio 1.6 mm	40/40 mm	4000 mm	RAL 9010	ml	40
3090017	Aluminium 1.6 mm	40/40 mm	4000 mm	RAL 9010	ml	40

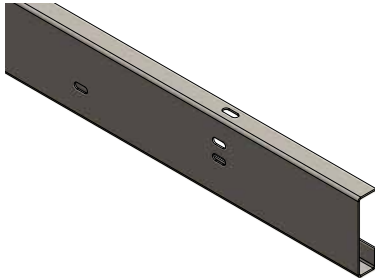


T40-Profil

Profilo a 40 mm | T40 - Profil

3070103	Aluminium 1,6 mm	40/40 mm	4000 mm	RAL 9016	lfm	40
3070103	Alluminio 1.6 mm	40/40 mm	4000 mm	RAL 9016	ml	40
3070103	Aluminium 1.6 mm	40/40 mm	4000 mm	RAL 9016	ml	40

Material	Dimension	Länge	Farbe	Einheit
Materiale	Dimensioni	Lunghezza	Colore	Unité
Matériaux	Dimension	Longueur	Couleur	Unità

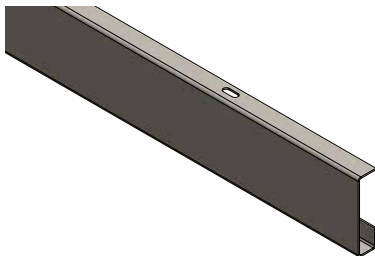


G-Tragprofil EI 30, oben und seitlich geschlitzt

Profilo di sostegno a G EI30, asolato in alto e sul lato

Profil-porteur G EI30, fentes en haut et sur le côté

3500056	verzinkter Stahl 1,5 mm	20/78/20/20 mm	2500 mm	RAL 9010	lfm	5
3500056	acciaio zincato 1.50 mm	20/78/20/20 mm	2500 mm	RAL 9010	ml	5
3500056	acier galvanisé 1.50 mm	20/78/20/20 mm	2500 mm	RAL 9010	ml	5

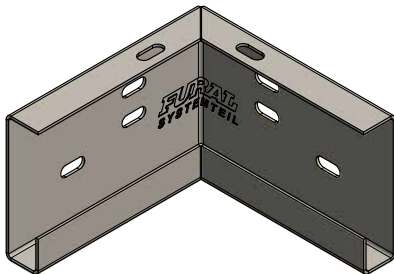


G-Tragprofil EI 30, oben geschlitzt

Profilo di sostegno a G EI30, asolato solo in alto

Profil-porteur G EI30, fentes en haut

3500057	verzinkter Stahl 1,5 mm	20/78/20/20 mm	2500 mm	RAL 9010	lfm	5
3500057	acciaio zincato 1.50 mm	20/78/20/20 mm	2500 mm	RAL 9010	ml	5
3500057	acier galvanisé 1.50 mm	20/78/20/20 mm	2500 mm	RAL 9010	ml	5

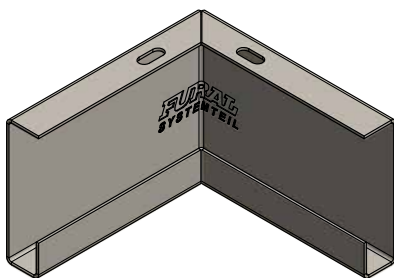


Eckverbinder EI30, oben und seitlich geschlitzt

Connettore angolare EI30, asolato in alto e sul lato

Raccord d'angle EI30, perforé en haut et sur les côtés

3500060	verzinkter Stahl 1,5 mm	120/120/78/20 mm	RAL 9010	Stk	4
3500060	acciaio zincato 1.5 mm	120/120/78/20 mm	RAL 9010	Borsa	4
3500060	acier galvanisé 1.5 mm	120/120/78/20 mm	RAL 9010	Sacs	4



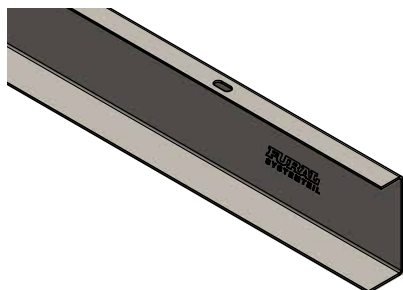
Eckverbinder EI30, oben geschlitzt

Connettore angolare EI30, asolato solo in alto

Raccord d'angle EI30, perforé en haut

3500061	verzinkter Stahl 1,5 mm	120/120/78/20 mm	RAL 9010	Stk	4
3500061	acciaio zincato 1.5 mm	120/120/78/20 mm	RAL 9010	Borsa	4
3500061	acier galvanisé 1.5 mm	120/120/78/20 mm	RAL 9010	Sacs	4

Material	Dimension	Länge	Farbe	Einheit
Materiale	Dimensioni	Lunghezza	Colore	Unité
Matériaux	Dimension	Longueur	Couleur	Unità

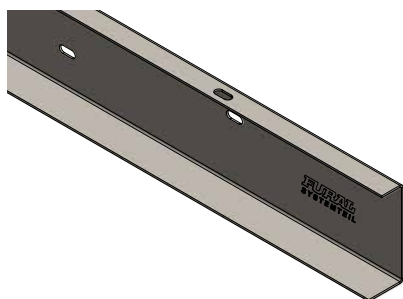


U-Tragprofil EI30, oben geschlitzt

Profilo di sostegno a U EI30, asolato solo in alto |

Profil porteur U EI30, perforé en haut

3510036	verzinkter Stahl 1,5 mm	20/80/32 mm	2500 mm	RAL 9010	Stk	2
3510036	acciaio zincato 1.5 mm	20/80/32 mm	2500 mm	RAL 9010	Borsa	2
4610008	acier galvanisé 1.5 mm	20/80/32 mm	2500 mm	RAL 9010	Sacs	2

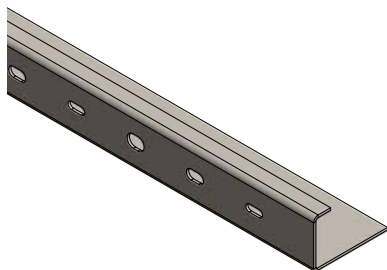


U-Tragprofil EI30, oben und seitlich geschlitzt

Profilo di sostegno a U EI30, asolato in alto e sul lato |

Profil porteur U EI30, perforé en haut et sur les côtés

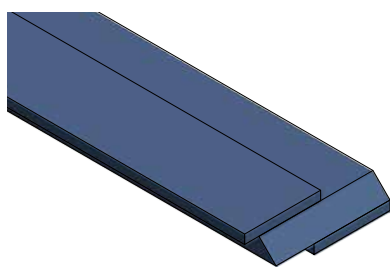
3510037	verzinkter Stahl 1,5 mm	20/80/32 mm	2500 mm	RAL 9010	Stk	2
3510037	acciaio zincato 1.5 mm	20/80/32 mm	2500 mm	RAL 9010	Borsa	2
3510037	acier galvanisé 1.5 mm	20/80/32 mm	2500 mm	RAL 9010	Sacs	2



U-Randwinkel unsichtbar

Angolare perimetrale a U nascosto | Profil-porteur U invisible

3500053	verzinkter Stahl 2,0 mm	15/42/65 mm	2500 mm	RAL 9010	lfm	5
3500053	acciaio zincato 2.0 mm	15/42/65 mm	2500 mm	RAL 9010	ml	5
3500053	acier galvanisé 2.0 mm	15/42/65 mm	2500 mm	RAL 9010	ml	5

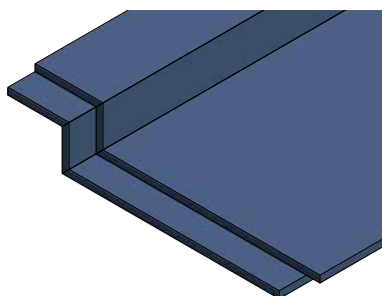


GKF Formteil Typ W5 | EI30

Modanatura in cartongesso tipo W5 | EI30

Pièce moulée en plaque de plâtre type W5 | EI30

4500035	Gipskarton 2x 9,5 mm + 1x 18 mm	2500 mm	lfm	2,5
4500035	Cartongesso 2x 9,5 mm + 1x 18 mm	2500 mm	ml	2,5
4500035	Plaque de plâtre 2x 9,5 mm + 1x 18 mm	2500 mm	ml	2,5



GKF Formteil Typ F10 für Friesbreite 400 mm | EI30

Modanatura in cartongesso tipo F10 per fregio 400 mm | EI30

Pièce moulée en plaque de plâtre type F10 pour frise 400 mm | EI30

4500030	Gipskarton 2x 12,5 mm	2500 mm	lfm	2,5
4500030	Cartongesso 2x 12,5 mm	2500 mm	ml	2,5
4500030	Plaque de plâtre 2x 12,5 mm	2500 mm	ml	2,5

Material	Dimension	Länge	Farbe	Einheit
Materiale	Dimensioni	Lunghezza	Colore	Unité
Matériaux	Dimension	Longueur	Couleur	Unità



FURAL DP Deckenprofil ungelocht

Profilo per soffitto FURAL DP non forato

Profil de plafond FURAL DP non perforé

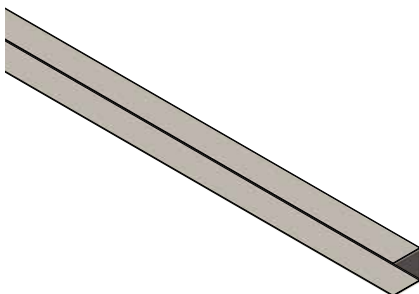
3500039	verzinkter Stahl 1,0 mm	5,5/29/61,5/29/5,5 mm	2500 mm	blank	lfm	2,5
3500039	acciaio zincato 1.0 mm	5,5/29/61,5/29/5,5 mm	2500 mm	non rivestito	ml	2,5
3500039	acier galvanisé 1.0 mm	5,5/29/61,5/29/5,5 mm	2500 mm	brut	ml	2,5



FURAL DP Deckenprofil gelocht

Profilo per soffitto FURAL DP forato | Profil de plafond FURAL DP perforé

3500042	verzinkter Stahl 1,0 mm	5,5/29/61,5/29/5,5 mm	2500 mm	blank	lfm	2,5
3500042	acciaio zincato 1.0 mm	5,5/29/61,5/29/5,5 mm	2500 mm	non rivestito	ml	2,5
3500042	acier galvanisé 1.0 mm	5,5/29/61,5/29/5,5 mm	2500 mm	brut	ml	2,5



UD-Profil

Profilo UD | Profil UD

3510031	verzinkter Stahl 0,6 mm	28/27 mm	3000 mm	blank	Stk	1
3510031	acciaio zincato 0.6 mm	28/27 mm	3000 mm	non rivestito	Borsa	1
3510031	acier galvanisé 0.6 mm	28/27 mm	3000 mm	brut	Sacs	1



Noniushängerunterteil für DP-Profil

Barra asolata/Nonius inferiore per profilo UD

Partie inférieure de la suspension Nonius pour profil DP

3500037	verzinkter Stahl 1,0 mm	116/58/14 mm	blank	Stk	100
3500037	acciaio zincato 1.0 mm	116/58/14 mm	non rivestito	Borsa	100
3500037	acier galvanisé 1.0 mm	116/58/14 mm	brut	Sacs	100



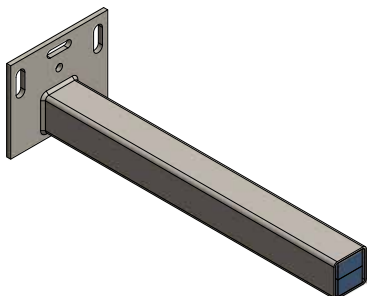
Noniushängerunterteil für Rostwinkel

Barra asolata/Nonius inferiore per barra primaria forata

Partie inférieure de la suspension Nonius pour cornière perforée

3060034	verzinkter Stahl 1,00 mm	28/9 mm	blank	Stk	100
3060034	acciaio zincato 1,00 mm	28/9 mm	non rivestito	pz	100
3060034	acier galvanisé 1.0 mm	28/9 mm	brut	pc	100

Material	Dimension	Länge	Farbe	Einheit
Materiale	Dimensioni	Lunghezza	Colore	Unité
Matériaux	Dimension	Longueur	Couleur	Unità

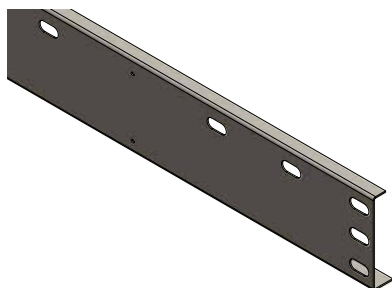


Kombikonsole mit Gipsstreifen

Staffa combinata con riempimento in cartogesso

Console combinée avec remplissage de plâtre

3500105	verzinkter Stahl 5,0 mm	100/120 mm	365 mm	blank	Stk	20
3500105	acciaio zincato 5.0 mm	100/120 mm	365 mm	non rivestito	pz	20
3500105	acier galvanisé 5.0 mm	100/120 mm	365 mm	brut	pc	20

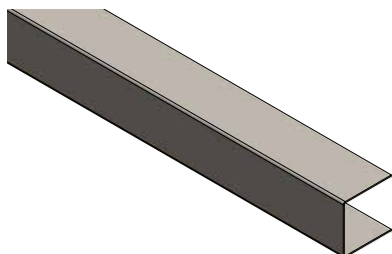


Lastverteilungsprofil für GK Wand

Profilo di distribuzione del carico per pareti in cartongesso

Profil de répartition de la charge pour cloison en placoplâtre

3610024	verzinkter Stahl 1,5 mm	25/104/16 mm	2500 mm		lfm	2,5
3610024	acciaio zincato 1.50 mm	25/104/16 mm	2500 mm		ml	2,5
3610024	acier galvanisé 1.50 mm	25/104/16 mm	2500 mm		ml	2,5



U-Profil für Konsole (Friesanschluss)

Profilo a U per staffa (connettore per fregio)

Profil U pour console (raccord de frise)

3500035	verzinkter Stahl 1,0 mm	50/50/50 mm	2500 mm	blank	lfm	2,5
3500035	acciaio zincato 1.0 mm	50/50/50 mm	2500 mm	non rivestito	ml	2,5
3500035	acier galvanisé 1.0 mm	50/50/50 mm	2500 mm	brut	ml	2,5

Material	Dimension	Länge	Farbe	Einheit
Materiale	Dimensioni	Lunghezza	Colore	Unité
Matériaux	Dimension	Longueur	Couleur	Unità



G-Tragprofil EI90, oben und seitlich geschlitzt

Profilo di sostegno a G EI90, asolato in alto e sul lato
 Profil-porteur G EI90, perforé en haut et sur le côté

3610026	verzinkter Stahl 2,0 mm	78/25/20 mm	2500 mm	RAL 9010	Stk	1
3610026	acciaio zincato 2.0 mm	78/25/20 mm	2500 mm	RAL 9010	Borsa	1
3610026	acier galvanisé 2.0 mm	78/25/20 mm	2500 mm	RAL 9010	Sacs	1



G-Tragprofil EI90, oben geschlitzt

Profilo di sostegno a G EI90, asolato solo in alto
 Profil-porteur G EI90, perforé en haut

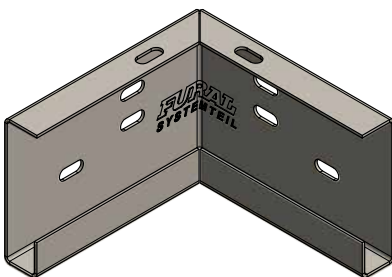
3610027	verzinkter Stahl 2,0 mm	78/25/20 mm	2500 mm	RAL 9010	Stk	2
3610027	acciaio zincato 2.0 mm	78/25/20 mm	2500 mm	RAL 9010	Borsa	2
3610027	acier galvanisé 2.0 mm	78/25/20 mm	2500 mm	RAL 9010	Sacs	2



Kupplung für G-Tragprofil EI90

Sottogiunto per profilo portante a G, EI90
 Connecteur pour profil-porteur G, EI90

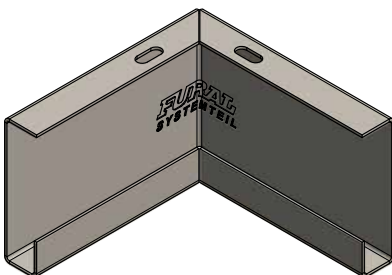
3500125	verzinkter Stahl 0,75 mm	100/73/16 mm	blank	Stk	20
3500125	acciaio zincato 0.75 mm	100/73/16 mm	non rivestito	Borsa	20
3500125	acier galvanisé 0.75 mm	100/73/16 mm	brut	Sacs	20



Eckverbinder EI90, oben und seitlich geschlitzt

Connettore angolare EI90, asolato in alto e sul lato
 Raccord d'angle EI90, perforé en haut et sur les côtés

3500123	verzinkter Stahl 2,0 mm	120/120/78/20 mm	RAL 9010	Stk	4
3500123	acciaio zincato 2,0 mm	120/120/78/20 mm	RAL 9010	Borsa	4
3500123	acier galvanisé 2,0 mm	120/120/78/20 mm	RAL 9010	Sacs	4

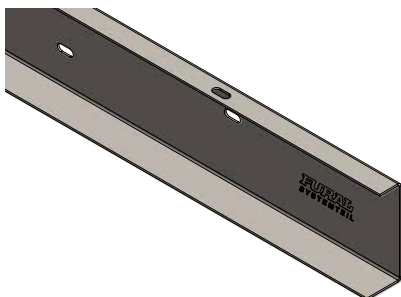


Eckverbinder EI90, oben geschlitzt

Connettore angolare EI90, asolato solo in alto
 Raccord d'angle EI90, perforé en haut

3500124	verzinkter Stahl 2,0 mm	120/120/78/20 mm	RAL 9010	Stk	4
3500124	acciaio zincato 2,0 mm	120/120/78/20 mm	RAL 9010	Borsa	4
3500124	acier galvanisé 2,0 mm	120/120/78/20 mm	RAL 9010	Sacs	4

Material	Dimension	Länge	Farbe	Einheit
Materiale	Dimensioni	Lunghezza	Colore	Unité
Matériaux	Dimension	Longueur	Couleur	Unità



U-Tragprofil EI90, oben und seitlich geschlitzt

Profilo di sostegno a U EI90, asolato in alto e sul lato
 Profil porteur U EI90, perforé en haut et sur les côtés

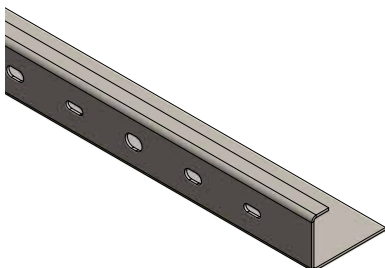
3610030	verzinkter Stahl 2,0 mm	20/80/32 mm	2500 mm	RAL 9010	Stk	1
3610030	acciaio zincato 2.0 mm	20/80/32 mm	2500 mm	RAL 9010	Borsa	1
3610030	acier galvanisé 2.0 mm	20/80/32 mm	2500 mm	RAL 9010	Sacs	1



U-Tragprofil EI90, oben geschlitzt

Profilo di sostegno a U EI90, asolato solo in alto
 Profil porteur U EI90, perforé en haut

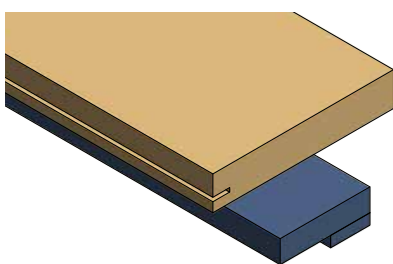
3610029	verzinkter Stahl 2,0 mm	20/80/32 mm	2500 mm	RAL 9010	Stk	2
3610029	acciaio zincato 2.0 mm	20/80/32 mm	2500 mm	RAL 9010	Borsa	2
3610029	acier galvanisé 2.0 mm	20/80/32 mm	2500 mm	RAL 9010	Sacs	2



U-Randwinkel unsichtbar

Angolare perimetrale a U nascosto | Profil-porteur U invisible

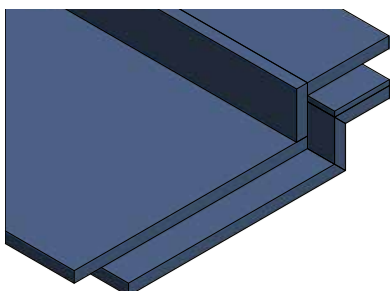
3500053	verzinkter Stahl 2,0 mm	15/42/65 mm	2500 mm	RAL 9010	lfm	2,5
3500053	acciaio zincato 2.0 mm	15/42/65 mm	2500 mm	RAL 9010	ml	2,5
3500053	acier galvanisé 2.0 mm	15/42/65 mm	2500 mm	RAL 9010	ml	2,5



GKF Formteil Typ W90 | EI90

Modanatura in cartongesso tipo W90 | EI90
 Pièce moulée en plaque de plâtre type W90 | EI30

4500076	Gipskarton 1x 9,5 mm + 1x 20 mm + Thermax 30 mm	1900 mm			lfm	1,9
4500076	Cartongesso 2x 9,5 mm + 1x 18 mm + Thermax 30 mm	1900 mm			ml	1,9
4500076	Plaque de plâtre 2x 9,5 mm + 1x 18 mm + Thermax 30 mm	1900 mm			ml	1,9

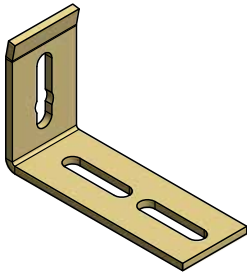


GKF Formteil Typ F50 für Friesbreite 400 mm | EI90

Modanatura in cartongesso tipo F50 per fregio 400 mm | EI90
 Pièce moulée en plaque de plâtre type F50 pour frise 400 mm | EI30

4500075	Gipskarton 2x20 mm	2000 mm			lfm	2
4500075	Cartongesso 2x20 mm	2000 mm			ml	2
4500075	Plaque de plâtre 2x20 mm	2000 mm			ml	2

Material	Dimension	Länge	Farbe	Einheit
Materiale	Dimensioni	Lunghezza	Colore	Unité
Matériaux	Dimension	Longueur	Couleur	Unità

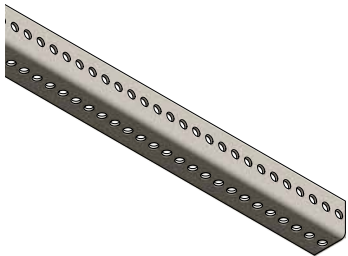


Universalbefestigungswinkel

Squadretta universale di montaggio

Equerre de fixation universelle

3040004	verzinkter Stahl 3,0 mm	82/53/30 mm	blank	Stk	50
3040004	acciaio zincato 3.0 mm	82/53/30 mm	non rivestito	Borsa	50
3040004	acier galvanisé 3.0 mm	82/53/30 mm	brut	Sacs	50



L-Rostwinkel

Barra primaria forata a L

Cornière perforée

3490002	verzinkter Stahl 2,0 mm	30/30 mm	4000 mm	blank	lfm	40
3490002	acciaio zincato 2.0 mm	30/30 mm	4000 mm	non rivestito	ml	40
3490002	acier galvanisé 2.0 mm	30/30 mm	4000 mm	brut	ml	40

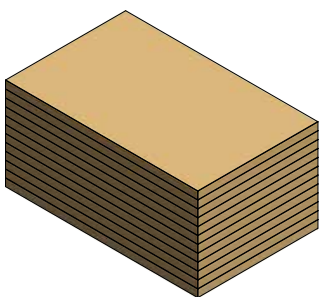


Mineralwollmanschette Rohrschale

Manicotto per rivestimento in lana minerale

Manchette en laine minérale

8900027		1000 mm	Stk	12
8900027		1000 mm	pz	12
8900027		1000 mm	pc	12



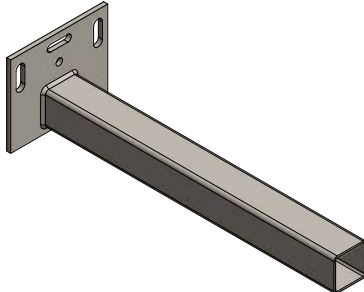
Termarock Rockwolle 40 mm

Termarock Rockwoll 40 mm

Termarock Rockwoll 40 mm

6250460	Termarock Rockwoll 40 mm	40/625 mm	1000 mm	Stk	1
6250460	Termarock Rockwoll 40 mm	40/625 mm	1000 mm	pz	1
6250460	Termarock Rockwoll 40 mm	40/625 mm	1000 mm	pc	1

Material	Dimension	Länge	Farbe	Einheit
Materiale	Dimensioni	Lunghezza	Colore	Unité
Matériaux	Dimension	Longueur	Couleur	Unità

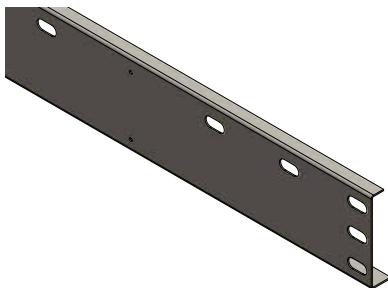


Kombikonsole ohne Gipsstreifen

Staffa combinata senza riempimento in cartongesso

Console combinée sans remplissage de plâtre

3500044	verzinkter Stahl 5,0 mm	100/120 mm	365 mm	blank	Stk	20
3500044	acciaio zincato 5.0 mm	100/120 mm	365 mm	non rivestito	pz	20
3500044	acier galvanisé 5.0 mm	100/120 mm	365 mm	brut	pc	20

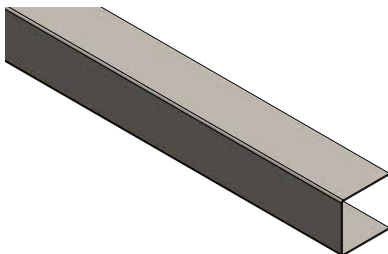


Lastverteilungsprofil für GK Wand

Profilo di distribuzione del carico per pareti in cartongesso

Profil de répartition de la charge pour cloison en placoplâtre

3610024	verzinkter Stahl 1,5 mm	25/104/16 mm	2500 mm		lfm	2,5
3610024	acciaio zincato 1.50 mm	25/104/16 mm	2500 mm		ml	2,5
3610024	acier galvanisé 1.50 mm	25/104/16 mm	2500 mm		ml	2,5



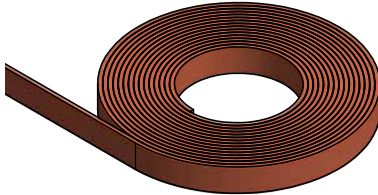
U-Profil für Konsole (Friesanschluss)

Profilo a U per staffa (connettore per fregio)

Profil U pour console (raccord de frise)

3500035	verzinkter Stahl 1,0 mm	50/50/50 mm	2500 mm	blank	lfm	2,5
3500035	acciaio zincato 1.0 mm	50/50/50 mm	2500 mm	non rivestito	ml	2,5
3500035	acier galvanisé 1.0 mm	50/50/50 mm	2500 mm	brut	ml	2,5

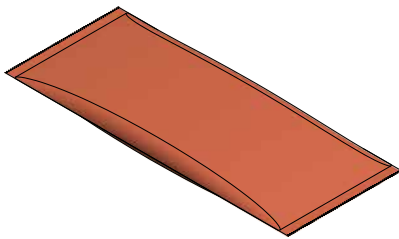
Material Materiale Matériaux	Dimension Dimensioni Dimension	Länge Lunghezza Longueur	Farbe Colore Couleur	Einheit Unité Unità
------------------------------------	--------------------------------------	--------------------------------	----------------------------	---------------------------



Roku-Strip Dämmschichtbildner

Striscia Roku-Strip intumescente
Bandes Roku-Strip

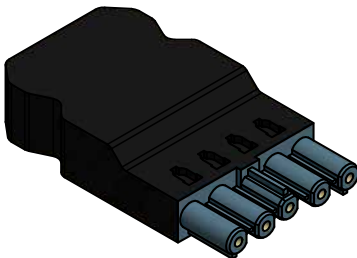
4600004	1,5/10 mm			lfm	25
4600004	1,5/10 mm			ml	25
4600004	1,5/10 mm			ml	25



Klebepaste FURTOL F Kernkleber

Pasta adesiva per montaggio FURTOL F
Adhésif/Colle à base de verre soluble

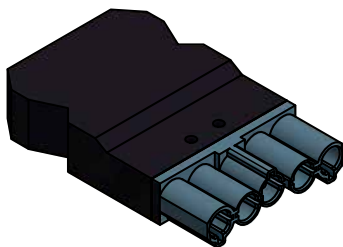
4610006				Beutel	1
4610006				Borsa	1
4610006				Sacs	1



Buchenteil 5 polig mit Schraubanschluss

Connettore femmina a 5 poli con connessione a vite
Connecteur femelle 5 pôles avec raccordement à vis

3700053		schwarz		Stk	50
3700053		nero		pz	50
3700053		noir		pc	50

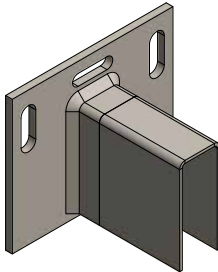


Steckerteil 5 polig mit Schraubanschluss

Connettore a 5 poli con connessione a vite
Connecteur 5 pôles avec raccordement à vis

3700054		schwarz		Stk	50
3700054		nero		pz	50
3700054		noir		pc	50

Material	Dimension	Länge	Farbe	Einheit
Materiale	Dimensioni	Lunghezza	Colore	Unité
Matériaux	Dimension	Longueur	Couleur	Unità

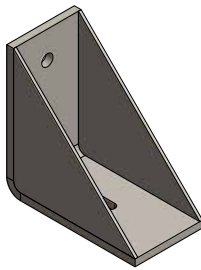


Wandschuh für Weitspanträger, innenliegend

Scarpa da parete per trave a campata lunga, interno

Equerre murale pour poutrelle à grande portée, emboîtée

3500068	verzinkter Stahl 5,0 mm	100/120 mm	85 mm	blank	Stk	2
3500068	acciaio zincato 5.0 mm	100/120 mm	85 mm	non rivestito	pz	2
3500068	acier galvanisé 5.0 mm	100/120 mm	85 mm	brut	pc	2

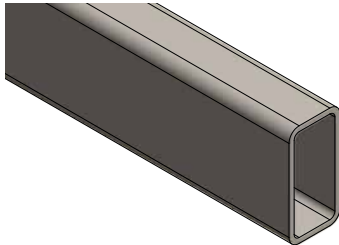


Wandschuh für Weitspanträger

Staffa a parete per trave a campata lunga

Equerre murale pour poutrelle à grande portée

3500038	verzinkter Stahl 5.0 mm	95/95 mm		blank	Stk	4
3500038	acciaio zincato 5.0 mm	95/95 mm		non rivestito	pz	4
3500038	acier galvanisé 5.0 mm	95/95 mm		brut	pc	4



Weitspanträger

Trave a campata lunga

Poutrelle à grande portée

4610008	verzinkter Stahl 4,0 mm	40/80 mm	4000 mm	blank	lfm	4
4610008	acciaio zincato 4.0 mm	40/80 mm	4000 mm	non rivestito	ml	4
4610008	acier galvanisé 4.0 mm	40/80 mm	4000 mm	brut	ml	4



Abschlusswinkel für Stirnseite

Angolo di finitura per larghezza corridoio

Equerre de finition pour largeur de couloir

3500036	verzinkter Stahl 1,5 mm	20/20 mm	2500 mm	RAL 9010	lfm	2,5
3500036	acciaio zincato 1.5 mm	20/20 mm	2500 mm	RAL 9010	ml	2,5
3500036	acier galvanisé 1.5 mm	20/20 mm	2500 mm	RAL 9010	ml	2,5

Fural

Systeme in Metall GmbH
Cumberlandstraße 66
4810 Gmunden
Österreich
T +43 7612 74 851 0
E fural@fural.at
W fural.com

Metalit

AG
Murmattenstrasse 7
6233 Büron
Schweiz
T +41 41 925 60 22
E metalit@metalit.ch
W metalit.ch

Dipling

Werk GmbH
Königsberger Straße 21
35410 Frankfurt Hungen
Deutschland
T +49 6402 52 58 0
E dipling@dipling.de
W dipling.de

BST Brünsch

GmbH
Alter Fuhrweg 10
57223 Kreuztal
Deutschland
T +49 2732 55 89 90
E bruensch@bruensch.com
W bruensch.com

Fural

Bohemia s.r.o.
Průmyslová II/985
383 01 Prachatice
Tschechische Republik
T +420 732 578 739
E info@fural.cz
W fural.com

Fural

Systeme in Metall GmbH
Büro BeNeLux
Corluytstraat 5 GLV
2160 Wommelgem
Belgien
T +32 3 808 53 20
E benelux-france@fural.com
W fural.com

Fural

Systeme in Metall GmbH Sp. z o.o.
Oddział w Polsce
ul. Krakowska 25
43-190 Mikotów
Polen
T +48 32 797 70 64
E polska@fural.com
W fural.com

Vertriebsstandorte**Produktionsstandorte**

AT Gmunden
CH Büron
DE Frankfurt Hungen
DE Kreuztal
CZ Prachatice

Technikstandorte

AT Gmunden
CH Büron
DE Frankfurt Hungen
DE Kreuztal
BE Wommelgem
PL Mikotów
FR Paris
CZ Prachatice